



LWHSC “IP ARM OF THE LEG”

Interprofessional Subcommittee
Laurel Snyder, MD



Disclosure

- I have no conflicts of interest.
- NOAMA has kindly supported my travel and accommodation.
- This presentation is made possible by contributions from:
 - Brock Chisholm: PT, subcommittee chair and co-founder
 - Jackie Hummelbrunner: SLP, subcommittee co-founder

The diffusion of innovation...

- innovators,
 - early adopters,
 - early majority,
 - late majority
 - laggards
-
- Everett Rogers, Diffusion of Innovations

How we did it?

As with starting anything new, we went through the 5 stages of change:

1. Pre-contemplation
2. Contemplation
3. Preparation
4. Action
5. Maintenance

And started as the **Lake of the Woods Health Sciences Campus**- value for all Health Sciences teachers in all disciplines.

Slide 4

MB1 Matthias Breiter, 27/10/2018

MB2 Brock

1. Pre-contemplation – recognized the need and the potential – « someone should do something »
2. Contemplation – we could do something
3. Preparation – decision to act – « we need to meet »
4. Action – carpe diem – NC flight to SSM – 4 of us met at the back of the plane and came up with a plan
5. Maintenance – ongoing – hardest stage

Matthias Breiter, 27/10/2018



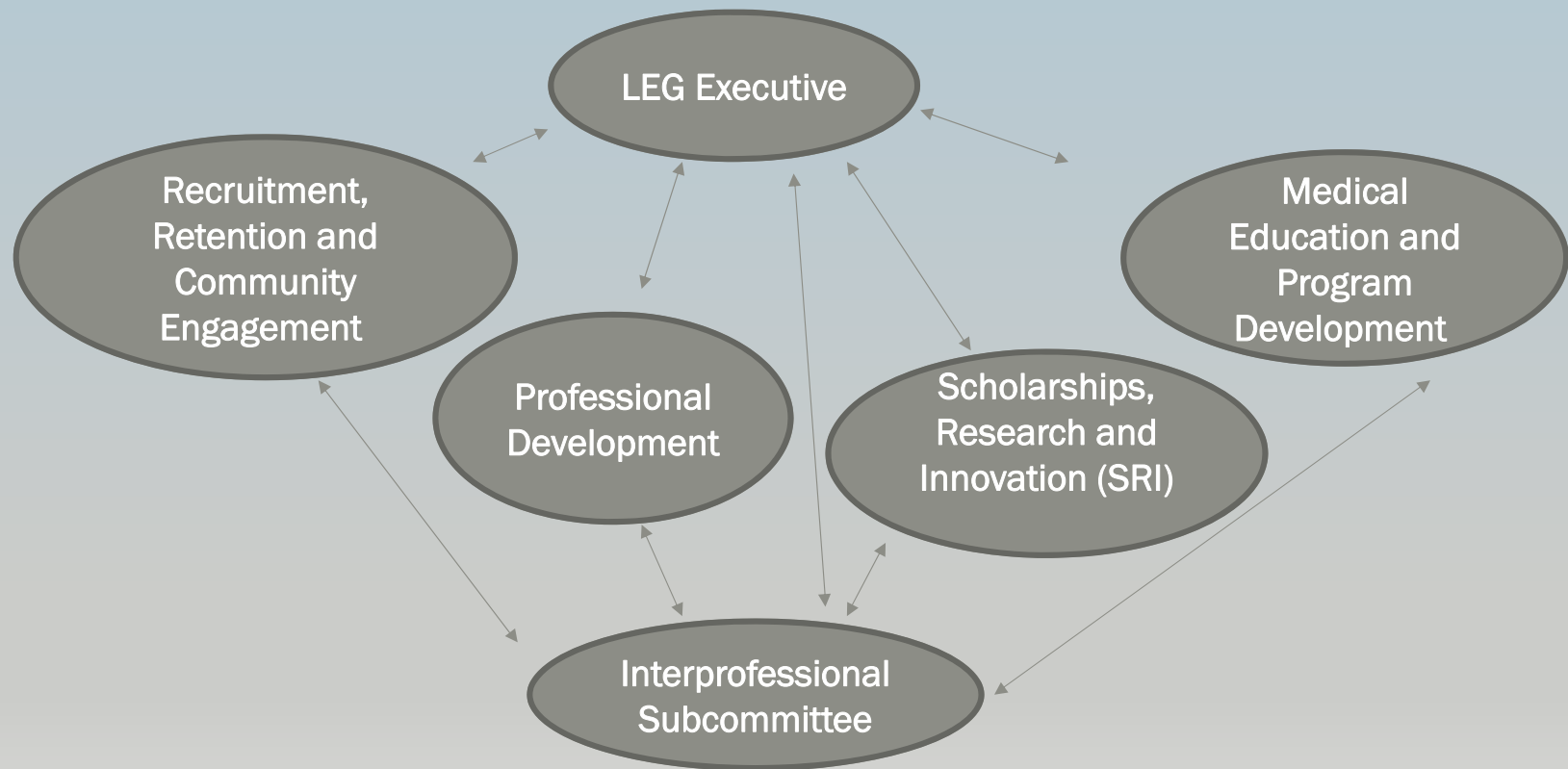
LAKE OF
THE WOODS

HEALTH

SCIENCES

CAMPUS

LWHSC LEG



Current Terms Of Reference

- LWHSC Local Education Group Interprofessional Subcommittee
- Attendance
- Terms Of Reference
- Mandate/Purpose/Role/Scope
- Reporting/Accountability/Budget
- Subcommittee Membership
- Meetings/Quorum
- Subcommittee Goals/Objectives (Appendix A)
- Enhance communication amongst regulated health care professional learners and providers in Kenora
- Improve interprofessional collaboration amongst regulated health care professional learners and providers in Kenora
- Promote interprofessional learning amongst regulated health care professional learners and providers in Kenora

Successes

- Who-What-When-and How Speed Dating
- All Health Professional Recruitment successes
- Community IP TOSCE- simulation: lab and outdoor (ski hill)
- Welcome Bags for new Learners
- Health Professional Meet and Greet and 'active living' events inclusive of all health care learners (Recreation Centre passes for health professional learners and other events)
- Linkage to NOSM IPL Events: Dr. Ruby Grymonpre , U of M

Challenges

- Time, Time, Time
- Faculty & Community Engagement
- Variation in learner numbers, training locations and time tables:
 - “Herding Cats”

Looking Ahead

- Health Provider Poker Derby
- Development of the Health Care Community Provider and Referral Map
- Ongoing work to establish our role within the LEG – ensure other LEG committees understand our role and how we can support each other
- Identify & capitalize on opportunities to collaborate with other committees to strengthen health education in Kenora
- Ongoing work to bring the health community together to support better health for all
- Contribute to planning of the new All Nations Hospital to insure state-of-the-art Interprofessional Education infrastructure for students and professionals